

NOTAS:


# EDUCANDO



¡ASI DE FACIL!



**Unidad de Cirugía**

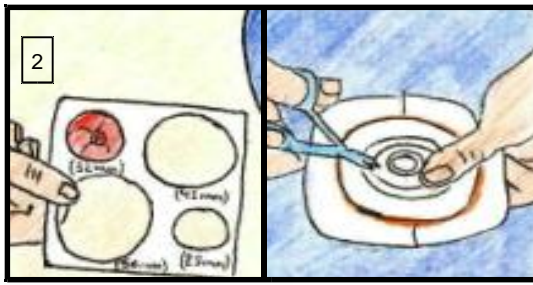


Empresa Pública Hospital Costa del Sol  
**CONSEJERÍA DE SALUD**

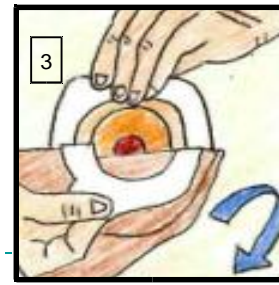
UNIDAD DE HOSPITALIZACIÓN 2100



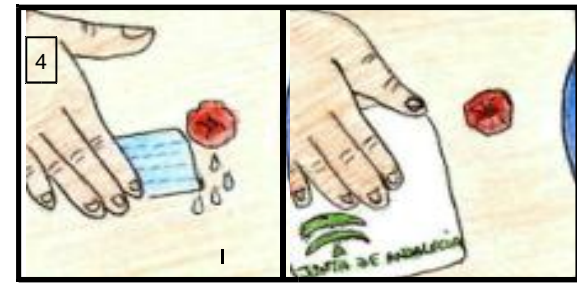
Lo tengo todo? / Do I have everything?



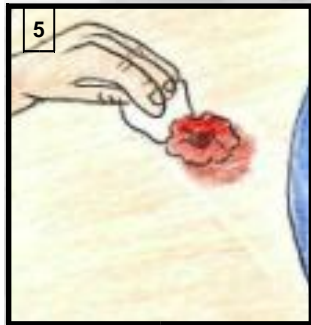
Adapto el dispositivo./ I adapt the device.



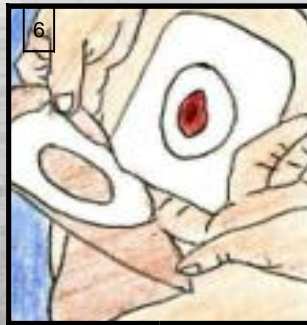
Retiro la placa de arriba hacia abajo suavemente./ I move slightly the plate away up and down



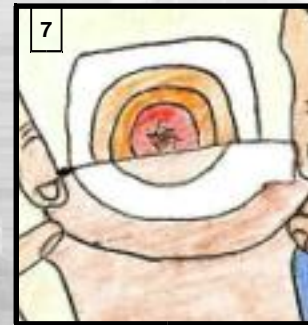
Lavo con agua tibia, seco suavemente, con pequeños toques. I wash it with lukewarm water; dry it slightly with faint taps



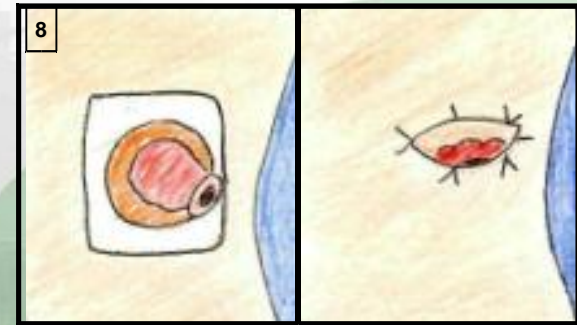
Sangrado? presiono sin retirar / Bleeding? I press without move



Pongo dispositivo de abajo hacia arriba, y utilizo pasta selladora / I set the device up and down and I use paste



Fuga? Mala adaptación de la bolsa, retirar inmediatamente y colocar otra / Leak? A bad adaptation of the bag, move immediately away and put everything again.



Vigile el estoma, si es diferente avisar / Keep an eye on the estoma, if it is different, inform!

Realizado por: M.º José Herrera Candiles, Silvia Barrero Sojo, M.º Isabel González Peral, Purificación Alcalá Gutiérrez